

Crystal Clock Oscillator

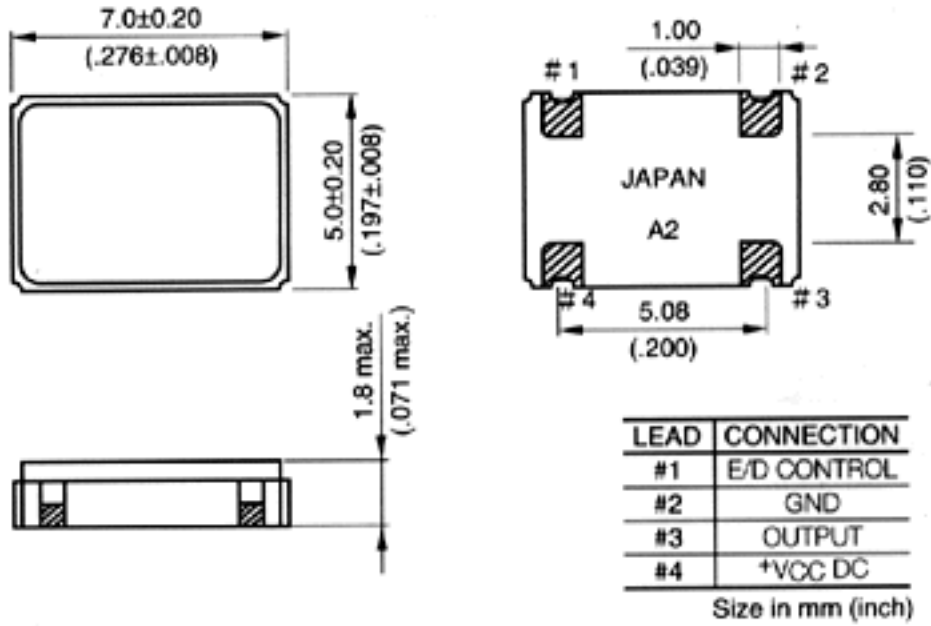
Part Number:	TCO-785SH
Applications:	Computers & Peripherals Consumer Application Instrumentation LAN-WAN Telecom (wired)
Package:	SMO-N -K
Package Dimensions:	7x5x2mm



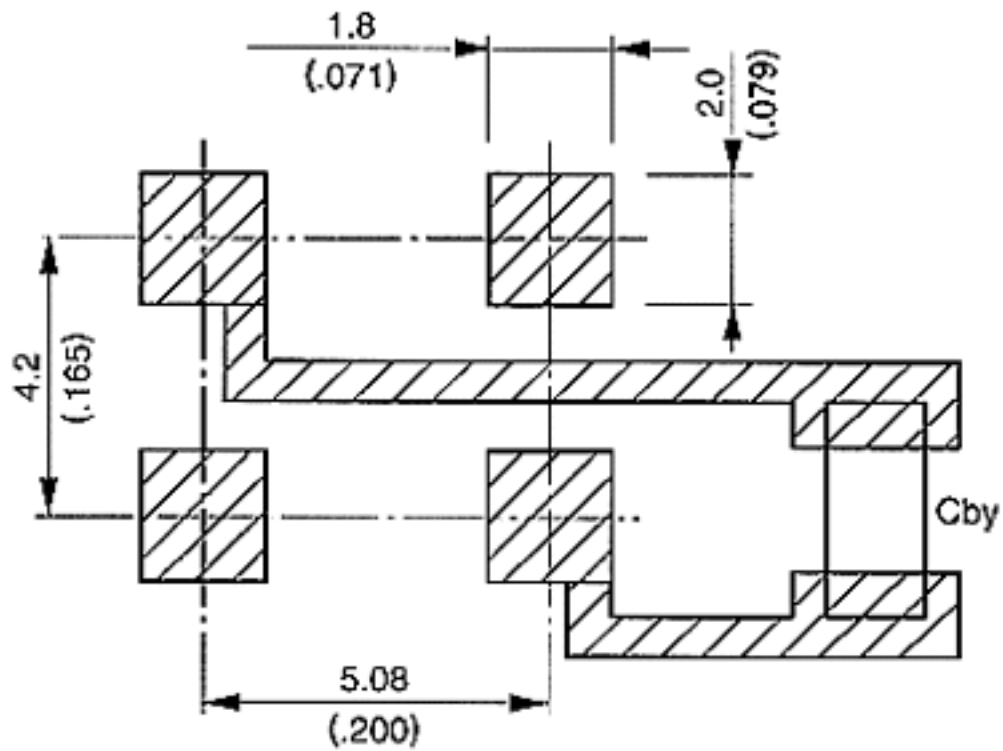
Product Specifications

Frequency Range:	1.5~70MHz	Frequency Stability:	±25ppm
Operating Temperature:	0~+70°C	Supply Voltage:	5.0V ±0.25V
Current Drain:	[I _{cc} Max] 10mA (1.5~10MHz), 15mA (10+~25MHz), 35mA (26+~35MHz), 35mA (36+~50MHz), 50mA (50+~70MHz)	Output Voltage:	V _{oh} =V _{cc} -0.4V, V _{ol} =0.4V
Symetry:	45:55 (at 50% V _{cc})	Rise/Fall Time:	12ns Max (1.5~26MHz), 10ns Max (26+~50MHz), 6ns Max (50~70MHz) at 10~90%V _{cc}
Load Capacitance:	50pF Max (1.5~26MHz), 30pF Max (26+~50MHz), 15pF Max (50+~70MHz)	Start-Up Time:	4ms Max (1.5~26MHz), 10ms Max (26+~70MHz)

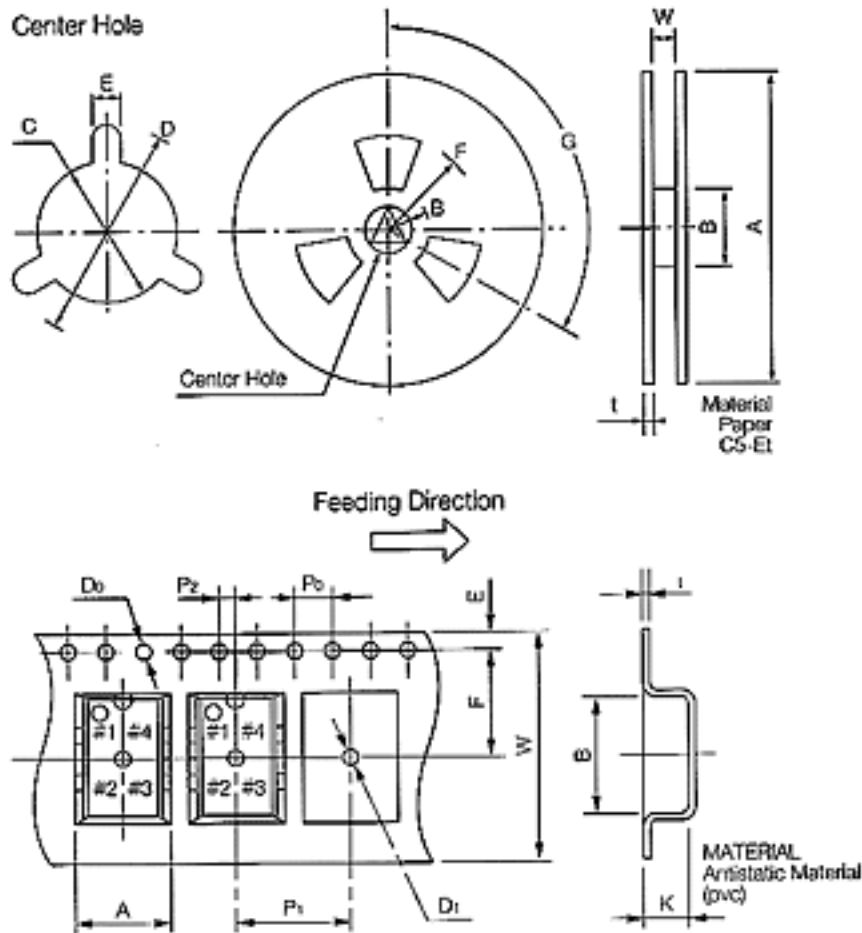
TCO-785SH | Outline Drawing



TCO-785SH | Foot Pattern



TCO-785SH | Tape and Reel



Tape dimensions

Package	Unit	A	B	D ₃	D ₁	E	F
SMO-J	(mm)	9.85	14.3	∅ 1.5	∅ 2.0	1.75	11.5
	(inch)	.388	.563	∅ .059	∅ .079	.069	.453
SMO-N	(mm)	5.75	7.65	∅ 1.5	∅ 2.0	1.75	7.5
	(inch)	.226	.301	∅ .059	∅ .079	.069	.295

Tape dimensions

Package	Unit	K	P ₀	P ₁	P ₂	t	W
SMO-J	(mm)	4.7	4.0	12.0	2.0	0.3	24.0
	(inch)	.185	.158	.472	.079	.012	.945
SMO-N	(mm)	2.1	4.0	8.0	2.0	0.3	16.0
	(inch)	.083	.157	.315	.079	.012	.630

Reel dimensions

Package	Unit	A	B	C	D	E	F
SMO-J	(mm)	∅ 330	∅ 80	∅ 13	∅ 21	3.C	∅ 190
	(inch)	∅ 13.0	∅ 3.15	∅ .512	∅ .827	.118	∅ 7.48
...	(mm)	∅ 255	∅ 80	∅ 13	∅ 25	2.C	∅ 215

SMD-N	(inch)	φ 10.0	φ 3.15	φ .512	φ .984	.079	φ 8.46
-------	--------	--------	--------	--------	--------	------	--------

Reel dimensions

Package	Unit	G	t	W
SMD-J	(mm)	120*	2.0	25.4
	(inch)	120*	.079	1.00
SMD-N	(mm)	120*	2.0	17.5
	(inch)	120*	.079	.689

[All sizes in mm]

For more information on this or any other product, please call 847.593.8780 or your nearest TOYOCOM representative.